

# Matrix42

## Software Management

From software distribution to patches and drivers: Matrix42 Software Management ensures the efficient management even of complex IT infrastructures in multiple locations.



Standardization plays a key role for software management – no matter if it concerns only a handful of corporate systems or a large network with locations all over the world. Matrix42 Software Management allows for the wizard-driven packaging, distribution and installation of software, based on individual distribution criteria. It is also possible to connect small locations via the Internet. The integrated patch management feature allows you to perform selective tests of patches and service packs prior to approval. This way, your clients, servers and mobile devices are always up-to-date – and costs remain low.



Support of all common packaging methods

### ▶ Complete automation of applications and packages

Easy creation, automated packaging and distribution of all application types (MSI, virtual software, unattended installation etc.)

### ▶ Fast installation of applications

No user log off required; optional information on installation duration and progress

### ▶ Ideal network utilization

Automatic bandwidth control through the Empirum Advanced Agent for transferring and installing any applications

### ▶ Integrated patch management

Fully automated installation and selective testing prior to general approval

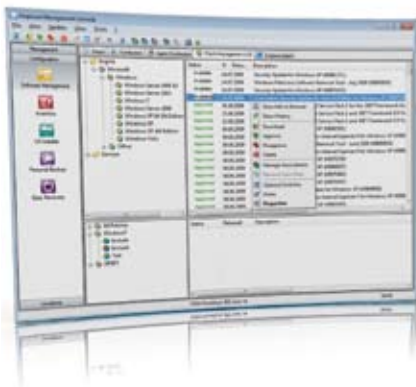


## Full Automation

The Matrix42 Software Management packaging/installation technology is based on a powerful script language. Wizards guide users through the package creation process; modifications are performed with a graphical editor. As a matter of course, full support of all common packaging methods such as unattended installation, MSI with own tools and application virtualization is also provided. There is also the option to use the Matrix42 Package Robot to create packages.

## Automated Patch Management

Matrix42 Empirum Patch-Management is a completely integrated solution for the automated test, distribution and installation of patches based on the latest generation of Microsoft WSUS, version 3. All processes can be automated completely. The test and approval process is defined once and then executed automatically.

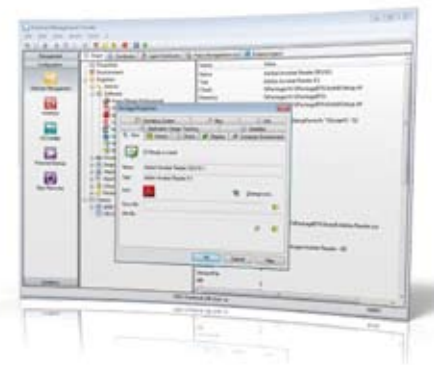


### Permanent protection to detect and remedy security vulnerabilities

Visibility of security holes, automated download, test and distribution of security patches

### Integrated software packaging

Easy creation, automated packaging and distribution of all application types (MSI, virtual software, unattended installation etc.)



- ▶ **Freely definable distribution criteria and dependencies**  
Very easy management of the distribution process, based on various criteria such as operating system, RAM or previously installed software
- ▶ **Dependency check**  
Active detection and reporting of unfulfilled dependencies to test them prior to the roll-out
- ▶ **Pull and push distributions**  
Can be scheduled or combined with Wake-On-LAN to define the ideal time of distribution.
- ▶ **Automated LDAP/Active Directory (AD) interface**  
Update of Matrix42 Empirum roles also within an Active Directory/eDirectory and on Linux clients
- ▶ **Empirum Automation Interface**  
Management of software distribution processes via command-line call or automation interface
- ▶ **Full ITIL integration in the configuration and release management**  
For instance, to administrate a Definitive Software Library (DSL), support the creation of release units or store and ensure compliance with a release policy

**matrix42**

Matrix42 AG  
Dornhofstraße 44-46  
63263 Neu-Isenburg  
Germany

Tel.: +49 (0) 6102/816-0  
info@matrix42.de

Matrix42 USA, Inc.  
400 Perimeter Center Terrace  
Suite 250  
Atlanta, Georgia 30346

Phone: +1 (888) 694-2872  
info@matrix42.com

[www.matrix42.com](http://www.matrix42.com)