

Matrix42 Personal Backup

Matrix42 Personal Backup performs backups of user settings, favorites, and files. Restoring them requires only a few mouse clicks if anything is lost or in need of migration.



Configuring a system with all the personal favorites, desktop links, email signatures and other personal settings can take several hours. Matrix42 Personal Backup eliminates time spent restoring personal settings and configurations.

The Personal Backup system can be installed by the administrator or the user and it automatically begins capturing all personal settings and data. If the user is migrating to a new system or settings need to be restored, it requires only a few mouse-clicks.



Matrix42 Personal Backup is especially well-suited for migration to Microsoft Windows 7 and Office 2007.

- ▶ **No data loss**
Easy wizard-based process
- ▶ **Automatic backup**
Scheduled or event-driven backups
- ▶ **Increased employee productivity**
No need to worry about settings backups. Faster migration or settings restoration
- ▶ **ITILv3 support**
Support of the ITIL-based IT service continuity management process



Safe and Secure

Matrix42 Personal Backup protects personal data and reliably restores settings and files – whether individual components or complete systems, including: accurate and secure mail settings, even signatures, favorites, desktop links and personal folders. Restore is either performed centrally via the management console or on the individual systems, Personal Backup even works across operating system versions, such as migration from Windows XP to Windows 7.

Backups can either be performed by the administrator or directly by the user, on a schedule or triggered by an event such as login or the screensaver is activated. Administrators can also integrate custom scripts, which can be initiated automatically.

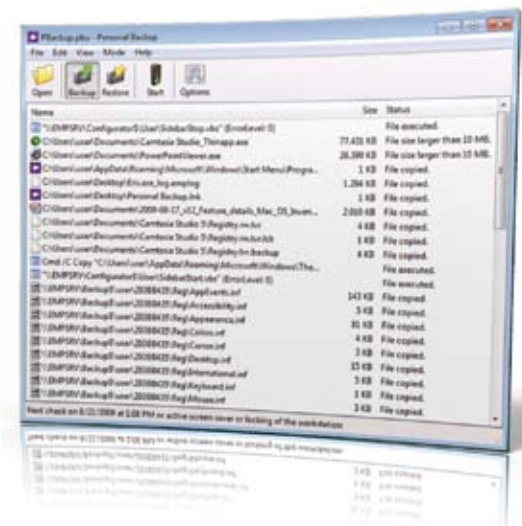
Personal Backup includes a standard list of applications to include in the backup, but this list can be expanded to include any number of additional applications.

Symmetric encryption

Personal Backup performs backups of personal data with a specific encryption algorithm to prevent unauthorized access and abuse. Encryption is controlled directly via a call parameter. The required password can either be specified by the administrator or the users themselves. If passwords are assigned centrally, the administrator creates a password and hands it over to Matrix42 Personal Backup in encrypted form via the call parameter. The same mechanism is used for restore purposes.

Reliable data backups for end users
Full backup control and restoration of software configurations and personal data can be delegated to the end user

- ▶ **Backups during operations**
Backups of personal folders, desktop and application settings in the background to prevent user interruption
- ▶ **Easier migration to Windows 7**
Complete restore of the user profile
- ▶ **Schedule**
Flexible schedules and events (for instance, when a system is started or when the screensaver is activated)
- ▶ **Custom scripts**
Custom scripts can be used to execute additional commands.
- ▶ **Symmetric encryption**
Password assignment either centrally by the administrator or by the users themselves
- ▶ **Extendable backup list**
Easy addition of applications to the backup list to complement current standard software
- ▶ **Full Windows 7 support**
Full support for Windows 7 in 32-bit and 64-bit versions and support of all other common Microsoft operating systems



matrix42

Matrix42 AG
Dornhofstraße 44-46
63263 Neu-Isenburg
Germany

Tel.: +49 (0) 6102/816-0
info@matrix42.de

Matrix42 USA, Inc.
400 Perimeter Center Terrace
Suite 250
Atlanta, Georgia 30346

Phone: +1 (888) 694-2872
info@matrix42.com

www.matrix42.com