

# Matrix42 Inventory

Matrix42 provides 100 percent visibility into corporate hardware and software information – invaluable information for sound decision-making.



Matrix42 Inventory captures all the details of your entire network. The solution inventories all connected hardware and software and provides clear, up-to-date and ITIL-compatible information – at any time and across the whole life cycle. The history function logs all changes to the infrastructure and informs you if changes have occurred, for instance memory upgrades and software installations. Another key feature is the Application Usage Tracking (AUT) function: It tracks which applications are being used and how frequently, providing perfect visibility. All of this information can also be gathered anonymously, if desired.



Inventory works across many platforms, including: Microsoft, Linux, Mac OS X, Sun Solaris and mobile devices

- ▶ **Flexibility and ease of use**  
Fast asset information without the need to install software on the device
- ▶ **Complete visibility into all hardware and software**  
PCs, notebooks, servers, handhelds and also thin clients, network printers, routers, switches or IP phones
- ▶ **Overview of software utilization**  
Application Usage Tracking (AUT) for accurate license balancing through the reliable understanding and control of software utilization rates.
- ▶ **Identification of Windows 7 upgrade costs**  
Quick and easy determination of Windows 7 hardware requirements
- ▶ **Automatic inventory of user-specific data**  
Extended user information for asset management and software distribution purposes



## Automatic Detection of Networked Devices

Comprehensive network control coupled with Matrix42 Empirum suite enables device discovery across many different methods such as Ping, SNMP, DNS, WMI and Intel AMT in various configurations. A comprehensive list of all available devices can be viewed in the Matrix42 Management Console – including various filter and search options. This allows for alerts and notifications to be created for full control of the corporate inventory and the whole IT infrastructure via a centralized management console.

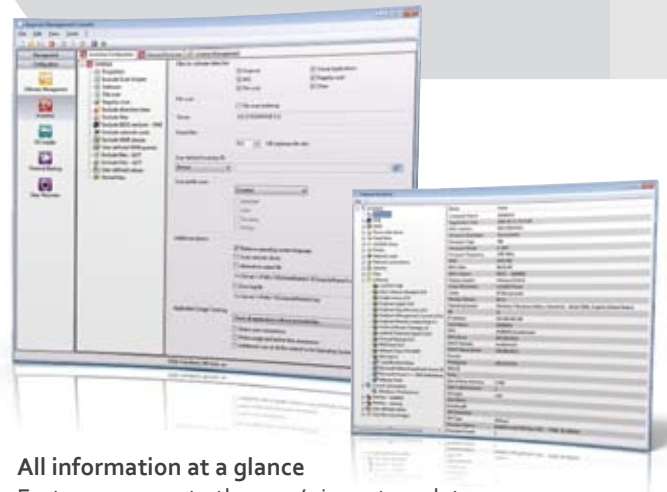
## Automatic Detection of User-Specific Data

The Matrix42 Data Collector is a piece of Matrix42 Inventory and is used to automatically collect user-specific data via forms, e.g., name, location, inventory number, telephone number, etc. It also allows users to read and write user-specific values on the client. Use the Empirum Data Collector to easily create professional forms and set up individual layouts and designs. Primarily used to automatically collect user-specific data and software distribution.

## Easy Integration

Matrix42 Inventory can be integrated with any asset and workflow systems. The solution provides a great variety of export options and standard adapters; the complete database schema is also supplied.

- ▶ **Comprehensive asset information**  
Collection of key hardware, software and network information in a configurable list
- ▶ **Freely customizable filters**  
Easy pre-selection of the collected systems based on any criteria – the basis for a targeted analysis and usage of this data
- ▶ **Predefined inventory reports (Crystal Reports)**  
Supply of export options and standard adapters upon request
- ▶ **Application Usage Tracking (AUT)**  
Analysis of utilization rates of defined software, also anonymously, if desired
- ▶ **Integrated inventory history**  
Changes on the clients are logged.  
An alarm is sent if certain events occur (e.g., via e-mail notification or SNMP).
- ▶ **Automatic device detection**  
The device discovery functions scans and inventories hardware such as network printers, routers, computers and even IP phones fully automatically.
- ▶ **Federated CMDB**  
Reliable and exact information on the IT infrastructure



**All information at a glance**  
Fast user access to the user's inventory data and fast integration with the helpdesk

**matrix42**

Matrix42 AG  
Dornhofstraße 44-46  
63263 Neu-Isenburg  
Germany

Tel.: +49 (0) 6102/816-0  
info@matrix42.de

Matrix42 USA, Inc.  
400 Perimeter Center Terrace  
Suite 250  
Atlanta, Georgia 30346

Phone: +1 (888) 694-2872  
info@matrix42.com

[www.matrix42.com](http://www.matrix42.com)