

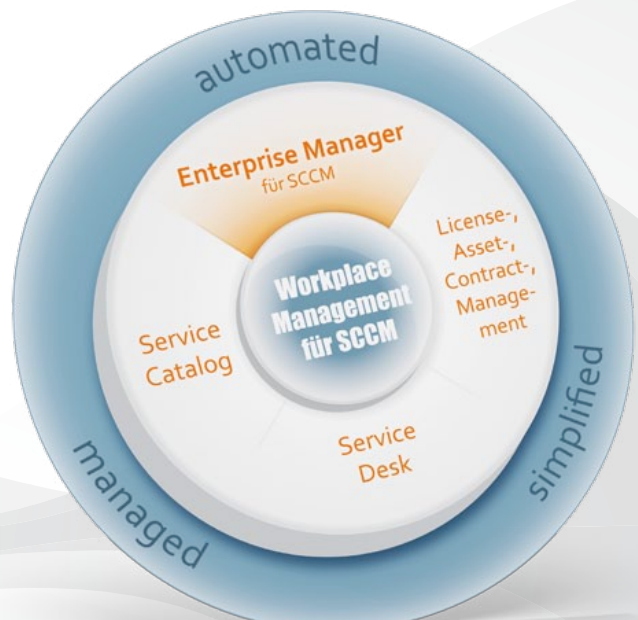
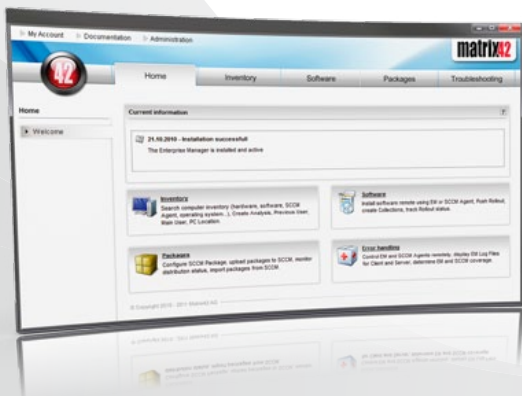
Matrix42 Enterprise Manager for SCCM

The essential add-on to SCCM

You use Microsoft SCCM for software distribution and inventory, but have you always wondered how you can use SCCM more efficiently and to its full extent? Matrix42 Enterprise Manager adds many useful features to SCCM and is an essential addition to your existing solution.

- ▶ Easy-to-use web console
- ▶ Package distribution in seconds rather than hours
- ▶ Reliable and flexible sequence control
- ▶ Fast and easy rollouts
- ▶ Easy delegation saves time
- ▶ Happy users thanks to Self Service

Microsoft®
GOLD CERTIFIED
Partner



Many tasks – one console

The Enterprise Manager adds an easy-to-use web console to SCCM which makes using SCCM a walk in the park – even for beginners.

The web portal offers a simple introduction to all SCCM tasks such as inventory, software, packaging and troubleshooting.



Package distribution in seconds rather than hours

Packaging tasks are often error-prone and time-consuming. Matrix42 Enterprise Manager simplifies the packaging for SCCM: easy package management – including compression and reliable sequence control – saves time and bandwidth. A guaranteed push rollout time of under one minute lets your SLAs shine in all their glory.

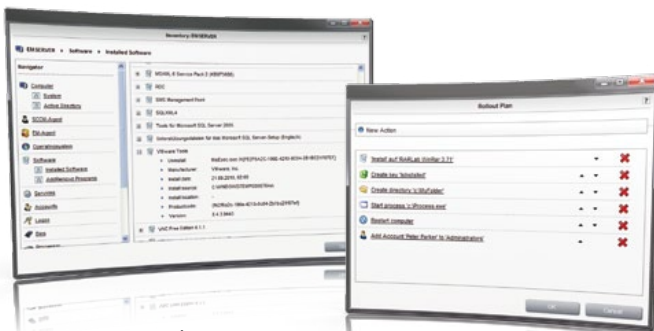


The most important functions straight out of the box

- ▶ User-defined package definitions including including sequence control and extended functionality when terminating the installation or having incorrect packages
- ▶ Use of technical and business information as a basis for the rollout as well as integration of own data or data sources
- ▶ Extended package download via http or LAN, packages can be opened on the clients
- ▶ Comprehensive and clear replication of packages includes information on available and missing packages and on the distribution time

Fast and easy rollouts

The Rollout Management included in Matrix42 Enterprise Manager offers IT professionals unlimited flexibility when it comes to rollouts: user-defined distribution destinations can be installed based on technical, business and organizational data. A quick beta test for new packages becomes as simple as 1, 2, 3.



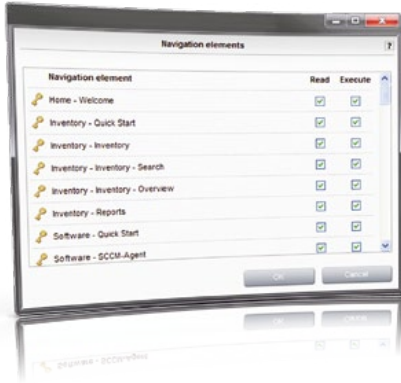
Inventory – can be extended easily and can be used in rollouts

Rollout plan for simplified sequence control

- ▶ Extended destination and collection definition for the import of collections and their ad-hoc modifications
- ▶ Custom Distribution Groups for specific department or for “beta” rollouts
- ▶ Intelligent “Closet Server Detection” guarantees the quick continuation of an existing installation process
- ▶ Dedicated Enterprise Manager Agent which can be configured in detail from the web interface and thus allows interaction with the end user

Easy delegation saves time

The Matrix42 web console is clearly arranged and allows for the risk-free, role-based and easy delegation of tasks – even to beginners. This role model can be restricted as needed.



Delegation – clear, flexible, safe and quick rights and roles concept

- ▶ Simple and easy-to-use web interface for all users
- ▶ Restrictions possible according to area, department, actions, packages, reports and many more
- ▶ Comprehensive replacement rules
- ▶ Mail templates

Happy users

With Matrix42 Enterprise Manager, the users can decide when they want to have something installed – subject to pre-defined time frames, of course. This means users are happier while rollouts can be easily scheduled.



Putting end users first

- ▶ Information provided to end users when a particular service is available
- ▶ Users decide on the time of installation themselves
- ▶ Possibility to postpone installations

+

Optional: comprehensive integration of Matrix42 Service Catalog – for even happier users!

All IT services, from application programs to complete PC work stations, are clearly itemized in the Self Service Portal. It offers pre-defined IT services, which are delivered and invoiced after automatic approval. Users can track their orders and can return IT services they don't need anymore. This way, IT provisioning costs can be reduced by up to 70%.

Why Matrix42?

The answer is simple:

▶ Well established

Matrix42 is the market leader for Workplace Management Solutions and has been well established in the dynamic IT market with over 15 years of experience.

▶ Innovative

Matrix42 Workplace Management enables the seamless management of physical and virtual environments. It combines Client Lifecycle, Cloud, SaaS, Virtualization and Service Management into a holistic solution enabling users to have transparent access to their data and services everywhere, from any virtual or physical device at any time.

▶ International

Matrix42 employs over 200 employees worldwide and is represented in Europe and the USA. Customers include market-leading companies of all sizes from a wide range of industries.

▶ Connected

Matrix42 has numerous international top-class partnerships who can not only provide extensive counseling on Workplace Management but will also offer additional services.

▶ Future-Proof

In early 2008, Matrix42 became part of the Asseco Group. With over 8,000 employees and a market capitalization of around €1.2 billion, Asseco is one of Europe's largest software groups.

matrix42

Matrix42 USA, Inc.
400 Perimeter Center Terrace
Suite 250
Atlanta, Georgia 30346

Phone: +1 (888) 694-2872
info@matrix42.com

Matrix42 AG
Dornhofstraße 44-46
63263 Neu-Isenburg
Germany

Tel.: +49 (0) 6102/816-0
info@matrix42.de

www.matrix42.com