

Matrix42 Empirum

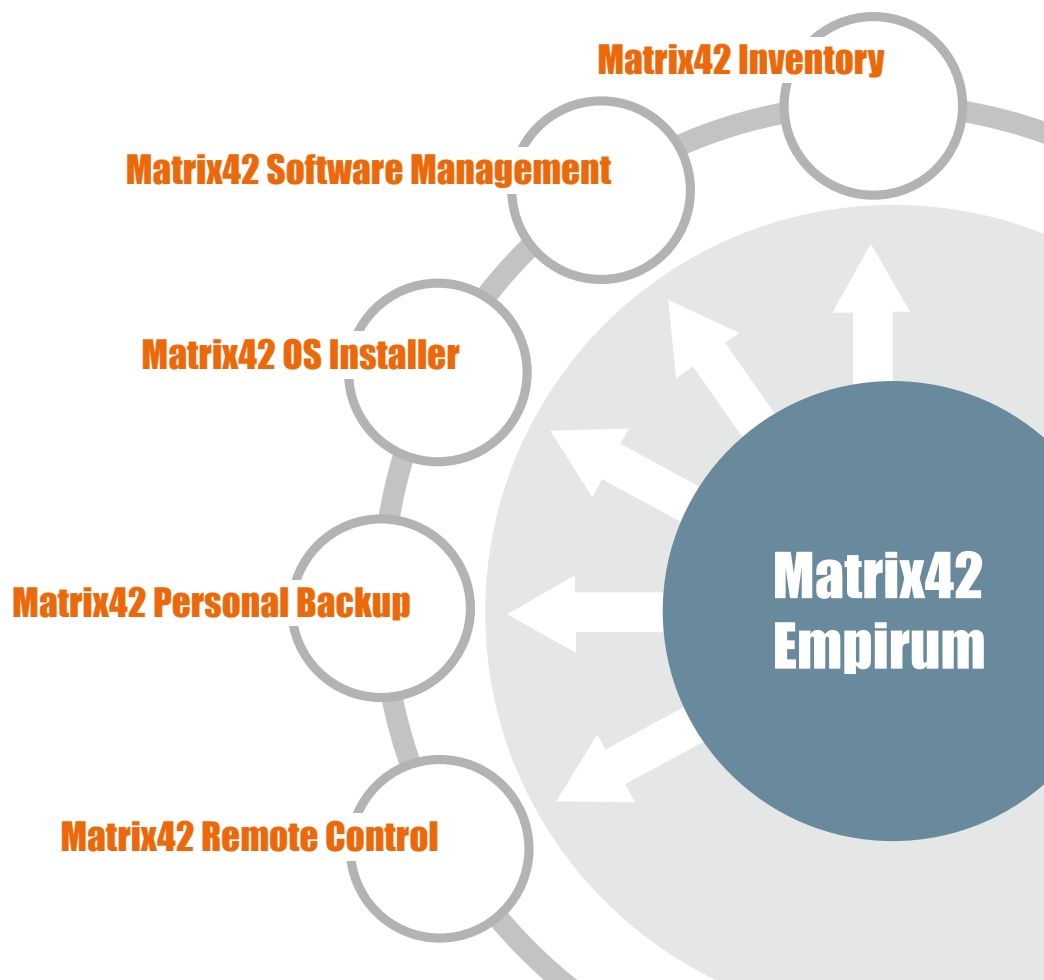
Empirum is at the center of successful IT management and is the only solution to integrate with all IT management processes: from initial installation and administration through secure data wiping – for virtual and physical desktops.



Benchmark Winner

Winner of the „Migration to Windows7“ benchmark test „IT-Administrator“ Jan '10

- ▶ Empirum allows for the centralized management of corporate PCs, servers, hypervisors, configurations and software assets running on Windows and Linux and can be completely integrated with existing IT infrastructure. Comprehensive automated user support and PC operations help users achieve measurable cost reductions. Empirum provides the leading-edge technology for completely automated content and software distribution via networks or the Internet. Use Empirum to easily distribute, install and modify all components of a PC workstation including: operating system, drivers, applications, policies, and even personal settings and data. The solution combines the physical and virtual work environment.

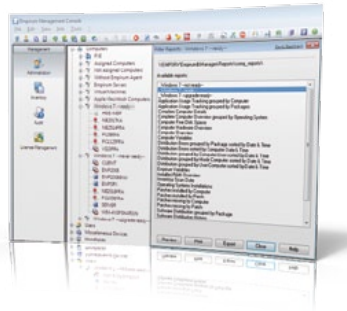


Matrix42 Empirum

Matrix42 Inventory

- ▶ 100% transparency of hardware and software

Up-to-date, complete inventory data provides the basis for corporate decision-making. Matrix42 Inventory provides a complete overview of hardware and software currently in use. The solution also detects and lists virtual machines and their relation to physical hardware. With this data, compatibility tests can be performed for new operating systems against all systems to more accurately plan migration projects. Matrix42 will provide IT with a clear picture of the entire enterprise for more accurate and complete corporate planning. The inventory system also maintains a history of changes made to hardware and software. For instance, if the configuration of a PC changes, such as memory or a graphics card, IT can receive a notification of the change.



Matrix42 Software Management

- ▶ Smart packaging, patch management, automatic configuration

Corporate software distribution and standardization are indispensable to minimize costs related to client and server administration. Matrix42 Software Management, including integrated patch management, intelligent packaging, a fast installation routine and the automatic configuration of e-mail or host access, ensures that all users are supplied the software they need.



- ▶ **Flexibility and ease of use**
Fast and reliable hardware and software information without the need to install the software on the device.
- ▶ **Proactive system monitoring**
Integrated alarm management via e-mail, audio, printer, fax or software.
- ▶ **Detailed inventory data**
Transparency of PCs, notebooks, servers, handhelds on multiple operating systems.
- ▶ **Inventory of all network devices**
such as thin clients, network printers, routers, switches, IP phones, including any information fields for enhanced asset management.
- ▶ **Application Usage Tracking (AUT)**
for more transparency and the reliable control of your software license management.
- ▶ **Automatic detection of user-specific data**
Extended user information is key for successful asset management and useful for software distribution.
- ▶ **Inventory of virtual infrastructure**
Detection of virtual software, guest-host relationship, use of applications on Citrix XenApp servers

- ▶ **Integrated patch management** for automated installation and selective patch testing prior to general approval
- ▶ **Empirum Advanced Agent** to transfer and install any applications, depending on the available bandwidth.
- ▶ **Mail or host access** is correctly configured automatically for each user.
- ▶ **Empirum installs applications** fast and without requiring the user to log off. Users can also be notified of the installation time required and current progress.
- ▶ **Packaging/installation technology**
Wizards guide users through package creation; modifications are performed with a graphical editor. Complete support is provided for unattended installation, MSI with custom tools and application virtualization. There is also the option to use the Matrix42 Package Robot for package creation.
- ▶ **Audit list for management activities** with detailed tracking for all activities, including software roll-outs.

Matrix42 OS Installer

▶ Enterprise-wide distribution of operating systems and hypervisors

Often, administrators are faced with an almost endless number of challenges when enterprise-wide operating systems need to be migrated. Use Matrix42 OS Installer to automate enterprise-wide operating system distributions (including migration from Windows XP to Windows 7). OS Installer installs operating systems without inflexible images - even for Linux. In addition, hypervisors can be set up automatically and can be added to a management farm. The driver database will provide hardware profiles for the latest PC configurations.

- ▶ **Unattended routine** with boot via PXE, disk, CD, Empirum-Partition. No on-site installation is required.
- ▶ **Automatic hardware detection** of network, graphics, sound and other drivers, which are loaded automatically by Empirum.
- ▶ **Fully automatic operating system installation**
Update hundreds of clients with the push of a button.
- ▶ **End-of-life management** to delete local hard disks completely, based on internationally accepted methods; optional deletion from the ADS or NDS is also possible.
- ▶ **Driver database**
Provisioning of hardware profiles for current PC configurations; upload and download of hardware profiles via Matrix42 Community
- ▶ **Management of hosting infrastructures**
Automatic provisioning of hypervisor infrastructures, creation of cluster and files, addition of hypervisors to the farm management server

Matrix42 Personal Backup

▶ Restore data and configurations

Matrix42 Personal Backup allows you to manage the part of the PC which has been ignored in the past, mostly due to a lack of suitable tools.

All end-user data and configurations can be restored any time at the push of a button- either centrally via software management or directly on the user's PC. This works if a system must be reinstalled completely and also if you want to selectively restore backed-up data, for instance, favorites or the mail configuration. Personal Backup can also be used to migrate operating system configurations and applications across multiple versions. Operating system settings, data and application settings can be restored, for instance, during migration from Windows XP to Windows 7.

- ▶ **No data loss**
Backup all configuration data, e.g., Notes ID, favorites, macros, dictionaries, etc.
- ▶ **Automatic backup**
No need to initiate a backup process. Automatic, schedule- and/or event-based backups.
- ▶ **Increased employee productivity**
New systems and/or operating system migrations? Help your employees to work immediately in their familiar environments without time-consuming modifications.
- ▶ **ITIL support**
First-class support of the ITIL continuity management process.
- ▶ **Pre-defined templates**
Backup of program settings within current standard software.

Matrix42 Remote Control

▶ Efficient remote maintenance

Designed for efficient remote support as well as server administration, Matrix42 Remote Control helps users reduce support-related costs significantly. Remote Control is completely integrated with the Empirum suite and software and client management. Because it is easy-to-use, users can be using it right away without any training.

- ▶ **Complete package:** Remote Control is completely integrated with the Empirum Suite.
- ▶ **Very responsive,** due to dynamic compression.
- ▶ **Easy and intuitive:** Fast problem resolution provides prompt support when failures have occurred. A change of perspectives facilitates work for the support staff.
- ▶ **Monitor applications and servers:**
Monitor any number of systems synchronously. The windows can be modified as desired to provide an overview at any time.

Empirum Minimum Requirements

▶ Empirum - Server Infrastructure

Min. 2 GHz server with min. 4 GB RAM, 40 GB HDD.
Windows Server 2003, Windows Server 2003 R2, Windows Server 2008, Windows Server 2008 R2, each with current service pack.
Microsoft SQL Server 2005, Microsoft SQL Server 2008 R2, each with current service pack, or Microsoft SQL 2008 Express (is supplied).

Please note: In no case must the new WAIK for Windows Server 2008 and Windows 7 be installed.

▶ Empirum – Supported Clients

All Microsoft Windows operating systems from Windows XP Service Pack 3 (32-bit / 64-bit) upwards

Novell

SUSE Linux Enterprise Desktop 10/ 11 (32-bit / 64-bit)
SUSE Linux Enterprise Server 10/11 (32-bit / 64-bit)

Red Hat

Enterprise Linux Server/ Desktop 4 (32-Bit / 64-Bit)
Enterprise Linux Server/ Desktop 5.5 (32-Bit / 64-Bit)

Handheld operating systems

Microsoft Windows CE 5.0
Microsoft Windows Mobile 5
Microsoft Windows Mobile 6 to 6.1

Apple (Inventory only)

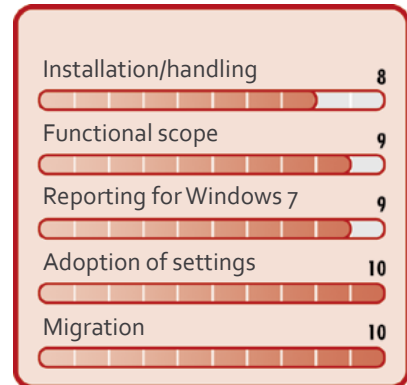
Mac OS X 10.4 (Tiger)
Mac OS X 10.5 (Leopard)
Mac OS X 10.6 (Snow Leopard)

Sun Solaris 9 (Inventory only)



Benchmark Winner

Rating of the IT-Administrator magazine (max. 10 scores)



Matrix42 Empirum V12



Perform automatic Windows 7 migrations with the test winner of the IT-Administrator magazine!

More information can be found under:
www.matrix42.com/windows7

matrix42

Matrix42 AG
Dornhofstraße 44-46
63263 Neu-Isenburg
Germany

Tel.: +49 (0) 6102/816-0
info@matrix42.de

Matrix42 USA, Inc.
400 Perimeter Center Terrace
Suite 250
Atlanta, Georgia 30346

Phone: +1 (888) 694-2872
info@matrix42.com

www.matrix42.com